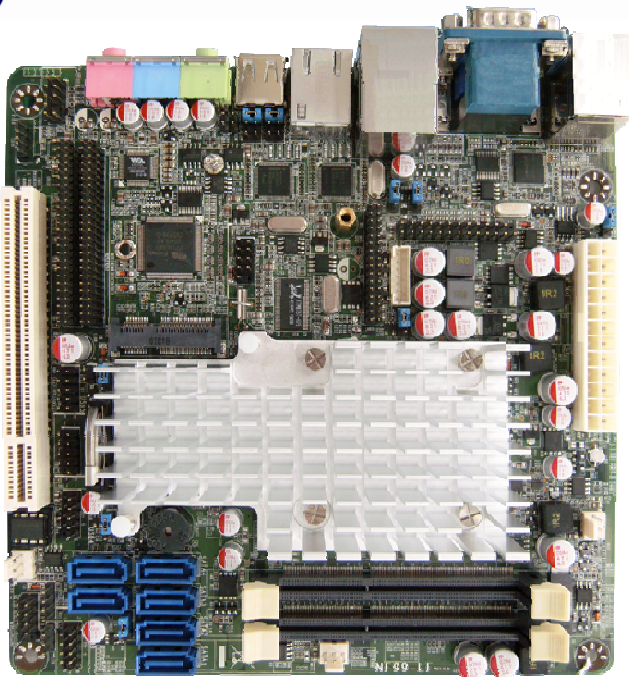
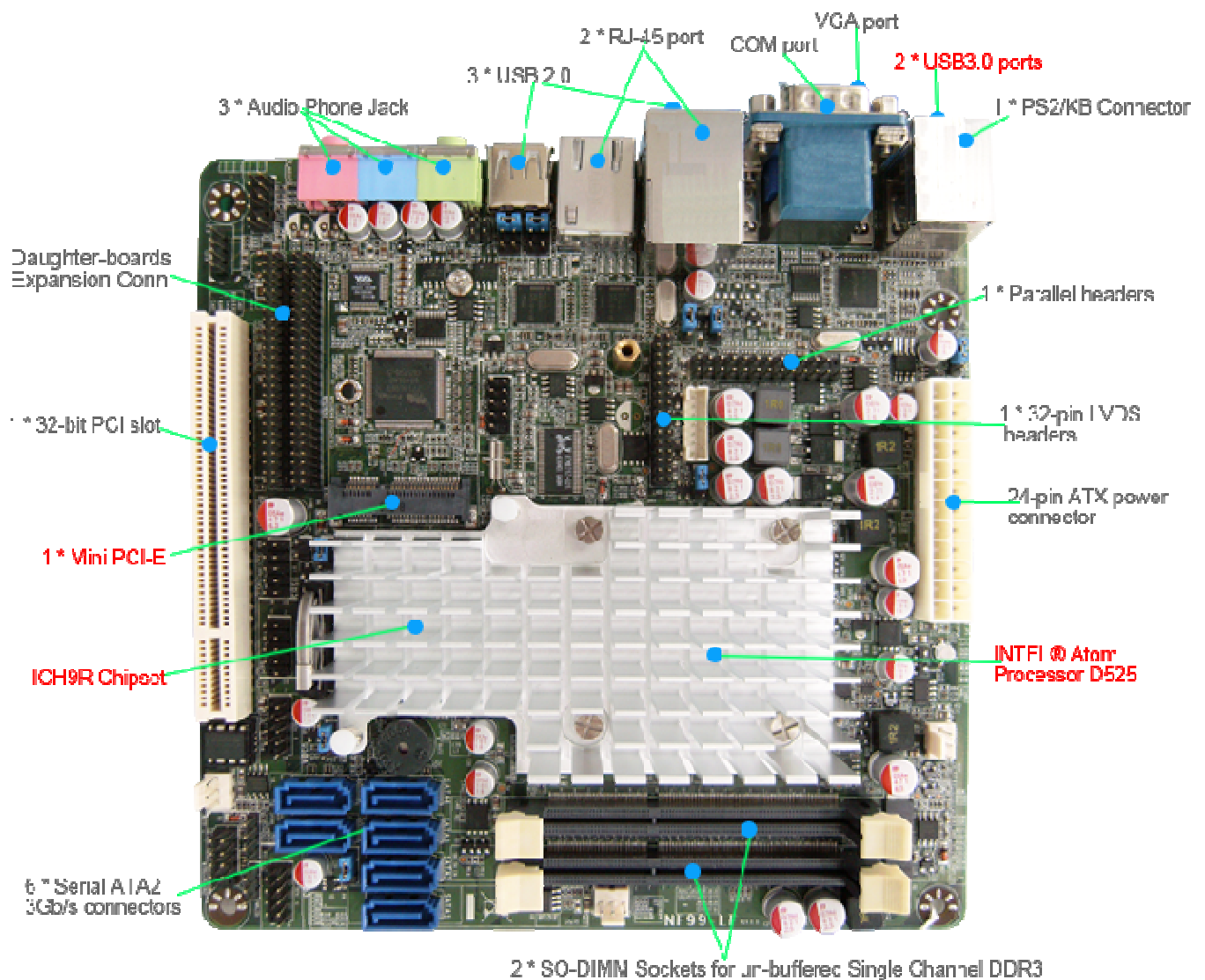


NF99FL-525



1. INTEL® Atom Processor D525 + ICH9R Chipset
2. Support INTEL® Atom Processor D525 (Dual Core) CPU
3. Support Single Channel DDR3 800
4. Support CPU Smart FAN
5. Integrated LVDS support 18-bit Single Channel
6. Supports 2 x Intel Gigabit LAN
7. Supports ACPI S3 Function
8. Support Watch dog Technology



Board Specifications

■ CPU	■ INTEL [®] Atom Processor D525 (Dual Core) CPU
■ Chipset	■ INTEL [®] Atom Processor D525 + ICH9R Chipset ■ Clock 200MHz
■ Memory	■ 2 * SO-DIMM Sockets for un-buffered Single Channel DDR3 800 SDRAM up to 4 GB
■ Expansion Slots	■ 1 * PCI slot ■ 1 * MINI PCI-E
■ Storage	■ 6 * Serial ATA2 3Gb/s connectors support RAID 0, 1, 5, 10 & JBOD
■ Audio	■ VIA VT1705 6-Channel HD Audio CODEC
■ Ethernet LAN	■ 2 * Intel 82574L PCI-E Gigabit Ethernet LAN
■ LVDS	■ Onboard 18-bits single channel LVDS connector
■ USB	■ Embedded 9 * USB 2.0/1.1 & 2 * USB 3.0
■ Special Features	■ Support ACPI S3 ■ Support CPU Smart FAN ■ Support Watch Dog
■ Rear Panel I / O	■ 3 * USB 2.0/1.1 & 2 * USB 3.0 ports ■ 1 * PS2/KB Connector ■ 2 * RJ-45 port ■ 1 * COM port ■ 1 * VGA port ■ 3 * Audio Phone Jack
■ Internal I / O	■ 3 * USB 2.0/1.1 headers for 6 USB 2.0 ports ■ CPU /NB / Chassis Fan connectors; ■ 1 * 32-pin LVDS headers & 1 * GPIO header & 1* Parallel headers ■ 1 * COM header (COM1 for RS-422/485) ■ 1 * AUDIO header
■ BIOS	■ AMI 8MB DIP Flash ROM
■ Form Factor	■ Mini ITX Form Factor(170mm x 170mm)
■ Functional	■ ATM, Automation, medical Equipment, Security, Networking, POS, General Application, Gaming Machine, Transportation
■ Certificate	■ CE, FCC, RoHS
■ Temperature	■ Operating within 0~60 centigrade ■ Storage within -20-85 centigrade

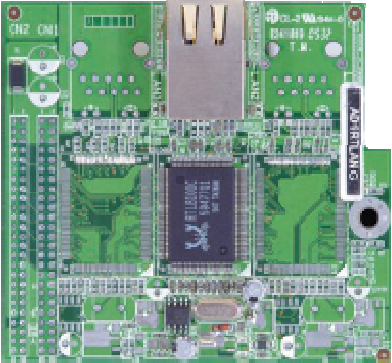
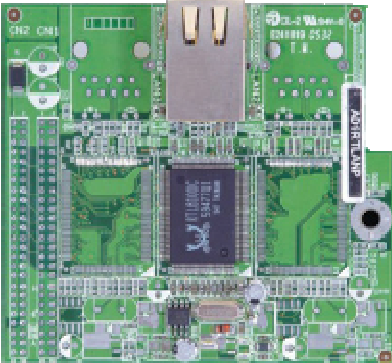
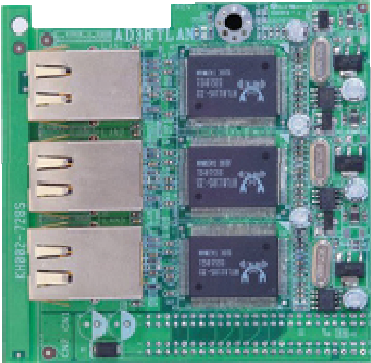
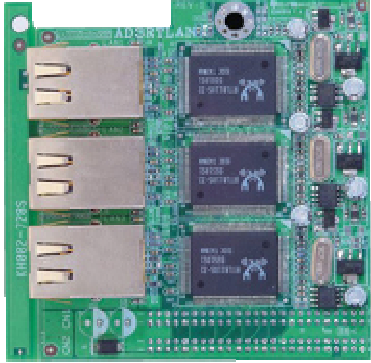
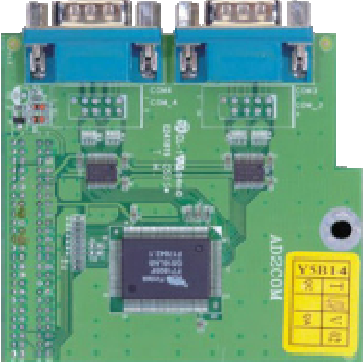
*For further information please visit the website at <http://www.jetway.com.tw>

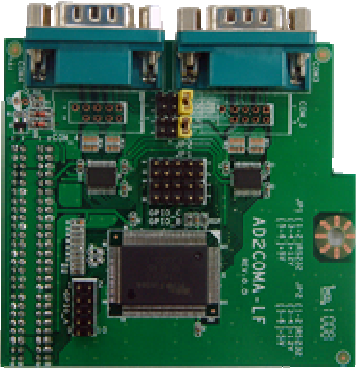
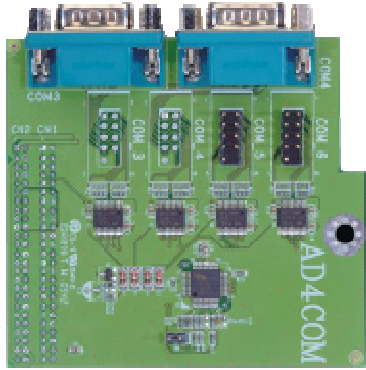
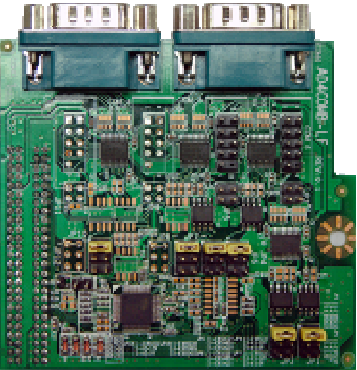
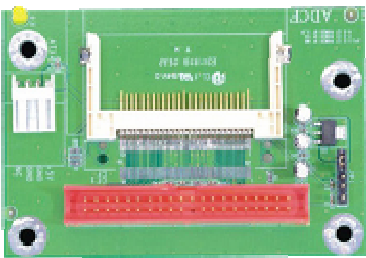
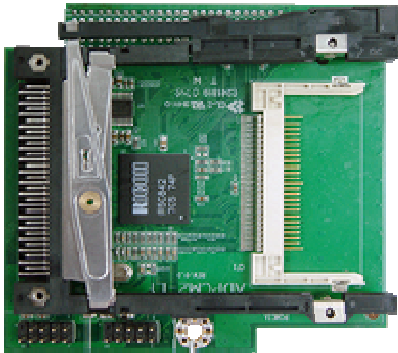
*The Specification may be changed without further notice.

Product Accessories

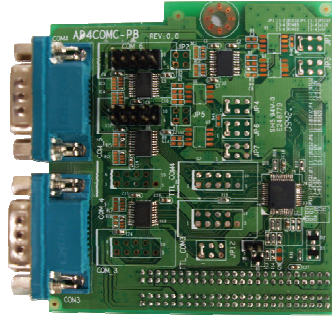
 <p>Manual</p>	 <p>CD</p>	 <p>SATA Cable</p>	
 <p>BOX</p>	 <p>IO Shield</p>	 <p>COM Cable</p>	

Expansion Daughter-boards (Optional)

<p>JAD1RTLNG</p>		<p>Specifications:</p> <p>1 * Realtek RTL8110SC PCI Gigabit LAN</p> <p>Accessories</p> <p>IO Shield: F04-094-F</p>
<p>JAD1RTLANP</p>		<p>Specifications:</p> <p>1* Realtek RTL8100C PCI 10/100m LAN</p> <p>Accessories</p> <p>IO Shield: F04-094-F</p>
<p>JAD3RTLNG</p>		<p>Specifications:</p> <p>3 * Realtek RTL8110SC PCI Gigabit LAN</p> <p>Accessories</p> <p>IO Shield: F04-094-F</p>
<p>JAD3RTLANP</p>		<p>Specifications:</p> <p>3 * Realtek RTL8100C PCI 10/100m LAN</p> <p>Accessories</p> <p>IO Shield: F04-094-F</p>
<p>JAD2COM</p>		<p>Specifications:</p> <p>2 * COM port</p> <p>Accessories</p> <p>IO Shield: F04-092</p> <p>F04-143-F for J7F5M series F04-164COM-F for NC92</p> <p>Manual: G03-MINI-ITX-ADF</p>

<p>JAD2COMGPIO</p>		<p>Specifications:</p> <p>2 * COM port + 24 bit GPIO</p> <p>Accessories</p> <p>IO Shield: F04-092 F04-143-F for J7F5M series F04-164COM-F for NC92</p> <p>Manual: G03-AD2COMGPIO-F</p>
<p>JAD4COM</p>		<p>Specifications:</p> <p>4 * COM port</p> <p>Accessories</p> <p>IO Shield: F04-092 F04-143-F for J7F5M series F04-164COM-F for NC92</p> <p>Manual: G03-MINI-ITX-ADF</p>
<p>JAD4COMB</p>		<p>Specifications:</p> <p>4 * COM port + 2 RS422/485</p> <p>Accessories</p> <p>IO Shield: F04-092 F04-143-F for J7F5M series F04-164COM-F for NC92</p> <p>Manual: G03-AD4COMB-F</p>
<p>JADCF</p>		<p>Specifications:</p> <p>IDE to CF Socket</p> <p>Accessories</p>
<p>JADPCM2</p>		<p>Specifications:</p> <p>1 * PCMCIA + 1X CF Socket</p> <p>Accessories</p> <p>IO Shield: F04-091-F F04-144-F for J7F5M series F04-164PC-F for NC92</p> <p>Manual: G03-MINI-ITX-AD</p>

JAD4COMC1



Specifications:

4 * RS-232 COM port

Accessories

IO Shield: F04-092-F

F04-164COM-F for NC92

F04-201-F for NF92

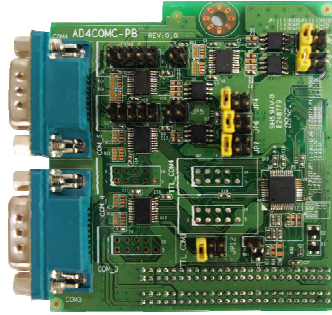
F04-230-F for NC9C

F04-207-1-F for NF96

Manual: G03-AD4COMB-F

Cable: G01-COM9-20A-F * 2

JAD4COMCB



Specifications:

4 * RS-232 COM port + 2 * RS-422/485

Accessories

IO Shield: F04-092-F

F04-164COM-F for NC92

F04-201-F for NF92

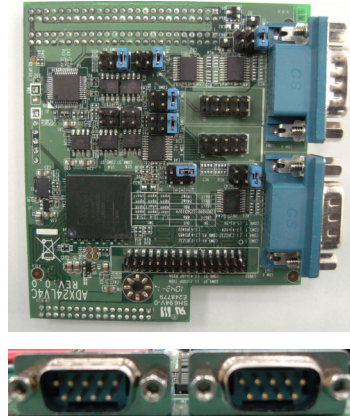
F04-230-F for NC9C

F04-207-1-F for NF96

Manual: G03-AD4COMB-F

Cable: G01-COM9-20A-F * 2

JADX24LV4C



Specifications:

2 * RS-232 COM port + 2 * RS-232/422/485

Accessories

IO Shield: F04-092-F

F04-164COM-F for NC92

F04-201-F for NF92

F04-230-F for NC9C

F04-207-1-F for NF96

Manual:

Cable: G01-COM9-20A-F * 2